

## CARDAN COUPLINGS

A.9.

### STANDARD

LMC's cardan couplings are heavy duty quick couplings used in agricultural, irrigation, cleaning and construction applications. They are most commonly used with systems carrying water, mortar, bitumen, bulk products, etc.

### OPERATION

Cardan couplings consist of a male and a female section. The female section incorporates a thick o-ring seal and a lever-operated 2-claw latch. The male section is inserted into the female section and the joint closed by latching the lever over the conical head of the male section. The seal between the male and female section enables the cardan coupling to remain secure up to + and - 15° deflection.

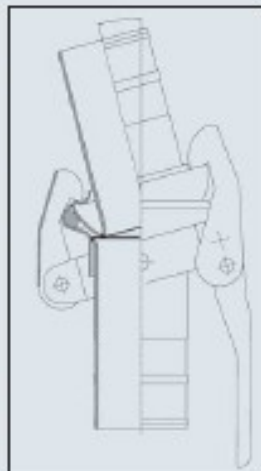
LMC's Cardan couplings hose shanks are designed to be used in heavy duty applications. This feature makes LMC's Cardan couplings more resistant to impact and wear, ensuring a longer working life.

N.B.: Cardan couplings are not interchangeable with Bauer couplings.

### FEATURES



1. Specially designed serrated hose shank for a perfect binding assembly using band clamps and safety clamps
2. Extra-thick wall for longer working life
3. Thick SBR o-ring seal for a guaranteed total seal in pressure and vacuum applications
4. Deflection up to 30° when closed (-15°/+15° axis)
5. Easy single handed closure



CARDAN COUPLINGS



**TUBOR RACHIA**  
ACESSÓRIOS E EQUIPAMENTOS INDUSTRIAIS, LDA.

Contribuinte N.º 502 547 294  
Sociedade por Quotas - Capital Social 49.880 Euros  
Registado na C. R. C. de Loures sob o N.º 08511

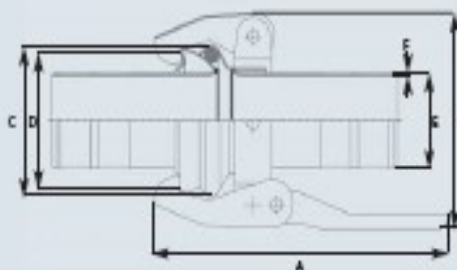
A.9.1

# CARDAN COUPLINGS



## DIMENSIONS

NO	A MM	B MM	C MM	D MM	E MM	F MM
50	230.0	128.0	85.0	76.0	51.0	2.60
70	270.0	163.0	108.0	103.0	63.0	3.60
80	310.0	194.0	136.0	133.0	76.1	2.90
108	360.0	232.0	161.0	154.0	101.6	3.60
133	370.0	264.0	188.0	179.0	127.0	4.00
159	370.0	313.0	223.0	210.0	152.4	4.00



Dimensions are given as illustration only

## APPLICATION

- Emptying tanks and reservoirs containing environmentally harmful waste products
- Transporting bulk products, such as grain, flour, feed, pellets, granulates, concrete and minerals
- Transporting water
- Pressure and suction connections to pumps

## WORKING PRESSURE

NO	BAR	PSI
50	20	290
70	20	290
80	15	217
108	15	217
133	10	145
159	10	145



## TEMPERATURE

-40°C / -40°F up to +80°C / +176°F

Hose, coupling, assembly method and seal must be chosen in relation with the desired application and temperature range.

## MATERIAL

- Coupling
  - Galvanized carbon steel St 37-2 (female section with steel lever)
  - Stainless steel AISI 304 - 1.4301 (female section with steel lever)
- Seal
  - SBR
  - NBR, EPDM on request

## ASSEMBLY

Band, bolt clamps  
 FK safety clamps to EN 14420-3 / DIN 2817  
 FLEXOLINE® safety clamp  
 Welding  
 A.9.2



**TUBORRACHÁ**  
 ACESSÓRIOS E EQUIPAMENTOS INDUSTRIAIS, LDA.

Contribuinte N.º 502 547 294  
 Sociéd. por Quotas • Capital Social 49.880 Euros  
 Registado na C. R. C. de Loures sob o N.º 08511

## CARDAN COUPLINGS



WWW.LMC-COUPLES.COM

A.9.

CARDAN COUPLINGS

### MALE HEAVY DUTY COUPLING WITH SERRATED HOSE SHANK

ND	For hose mm	Material	Weight/pc Kg	Reference
50	50	Carbon steel	0.48	KV5050
70	63	Carbon steel	0.88	KV5063
89	75	Carbon steel	1.62	KV5075
108	100	Carbon steel	2.19	KV5100
133	125	Carbon steel	3.62	KV5125
159	150	Carbon steel	4.30	KV5150
<hr/>				
50	50	Stainless steel	0.45	RKV5050
70	63	Stainless steel	0.83	RKV5063
89	75	Stainless steel	1.57	RKV5075
108	100	Stainless steel	2.10	RKV5100
133	125	Stainless steel	3.50	RKV5125
159	150	Stainless steel	4.12	RKV5150



Galvanized carbon steel  
Stainless steel AISI 304 - 1.4301  
Assembly: band or bolt clamps

### FEMALE HEAVY DUTY COUPLING WITH SERRATED HOSE SHANK

ND	For hose mm	Material	Weight/pc Kg	Reference
50	50	Carbon steel	1.13	KM5050
70	63	Carbon steel	1.89	KM5063
89	75	Carbon steel	3.19	KM5075
108	100	Carbon steel	5.06	KM5100
133	125	Carbon steel	8.01	KM5125
159	150	Carbon steel	9.11	KM5150
<hr/>				
50	50	Stainless steel	1.07	RKM5050
70	63	Stainless steel	1.77	RKM5063
89	75	Stainless steel	3.05	RKM5075
108	100	Stainless steel	4.92	RKM5100
133	125	Stainless steel	7.91	RKM5125
159	150	Stainless steel	9.00	RKM5150



Galvanized carbon steel  
Stainless steel AISI 304 - 1.4301  
Stainless steel coupling: lever in galvanized carbon steel  
Assembly: band or bolt clamps  
Standard SBR seal included



**TUBOR RACHÁ**  
ACESSÓRIOS E EQUIPAMENTOS INDUSTRIAIS, LDA.

Contribuinte N.º 502 547 294  
Societ. por Quotas • Capital Social 49.880 Euros  
Registado na C. R. C. de Loures sob o N.º 08511

## CARDAN COUPLINGS



## MALE HEAVY DUTY CARDAN COUPLING WITH SMOOTH HOSE SHANK

HD	For hose mm	Material	Weight/pc Kg	Reference
50	50	Carbon steel	0.54	KVSK050
70	63	Carbon steel	1.02	KVSK063
80	75	Carbon steel	1.42	KVSK075
108	100	Carbon steel	2.49	KVSK100
133	125	Carbon steel	4.39	KVSK125
159	150	Carbon steel	5.09	KVSK150
<hr/>				
50	50	Stainless steel	0.90	RKVS050
70	63	Stainless steel	0.92	RKVS063
80	75	Stainless steel	1.30	RKVS075
108	100	Stainless steel	2.35	RKVS100
133	125	Stainless steel	4.12	RKVS125
159	150	Stainless steel	5.01	RKVS150



Galvanized carbon steel  
 Stainless steel AISI 304 - 1.4301  
 Assembly: RK safety clamps complying with EN 14420-3 / DIN 2817  
 FLEXOLINE® safety clamps

## FEMALE HEAVY DUTY CARDAN COUPLING WITH SMOOTH HOSE SHANK

HD	For hose mm	Material	Weight/pc Kg	Reference
50	50	Carbon steel	1.21	KMSK050
70	63	Carbon steel	2.75	KMSK063
80	75	Carbon steel	3.15	KMSK075
108	100	Carbon steel	5.66	KMSK100
133	125	Carbon steel	7.82	KMSK125
159	150	Carbon steel	10.04	KMSK150
<hr/>				
50	50	Stainless steel	1.15	RKMSK050
70	63	Stainless steel	2.60	RKMSK063
80	75	Stainless steel	3.01	RKMSK075
108	100	Stainless steel	5.55	RKMSK100
133	125	Stainless steel	7.65	RKMSK125
159	150	Stainless steel	10.00	RKMSK150



Galvanized carbon steel  
 Stainless steel AISI 304 - 1.4301  
 Stainless steel coupling: lever in galvanized carbon steel  
 Assembly: RK safety clamps complying with EN 14420-3 / DIN 2817  
 FLEXOLINE® safety clamps  
 Standard seal SBR included



**TUBORRACHÁ**  
 ACESSÓRIOS E EQUIPAMENTOS INDUSTRIAIS, LDA.

Contribuinte N.º 502 547 294  
 Societ. por Quotas • Capital Social 49.880 Euros  
 Registrado na C. R. C. de Loures sob o N.º 08511

## CARDAN COUPLINGS



## MALE WELDING PART

ND	For tube mm	Material	Weight/pc Kg	Reference
50	50.0	Carbon steel	0.12	KVVK050
70	70.0	Carbon steel	0.27	KVVK070
89	89.0	Carbon steel	0.42	KVVK089
108	108.0	Carbon steel	0.63	KVVK108
133	133.0	Carbon steel	0.81	KVVK133
159	159.0	Carbon steel	1.28	KVVK159
<hr/>				
50	50.0	Stainless steel	0.10	RKVR050
70	70.0	Stainless steel	0.23	RKVR070
89	89.0	Stainless steel	0.36	RKVR089
108	108.0	Stainless steel	0.55	RKVR108
133	133.0	Stainless steel	0.76	RKVR133
159	159.0	Stainless steel	1.22	RKVR159



Non-galvanized carbon steel  
Stainless steel AISI 304 - 1.4301  
Assembly: Welding

## FEMALE WELDING PART

ND	For tube mm	Material	Weight/pc Kg	Reference
50	50.0	Carbon steel	0.76	KMFK050
70	70.0	Carbon steel	1.46	KMFK070
89	89.0	Carbon steel	1.79	KMFK089
108	108.0	Carbon steel	3.40	KMFK108
133	133.0	Carbon steel	5.14	KMFK133
159	159.0	Carbon steel	6.03	KMFK159
<hr/>				
50	50.0	Stainless steel	0.74	RKMFK050
70	70.0	Stainless steel	1.36	RKMFK070
89	89.0	Stainless steel	1.65	RKMFK089
108	108.0	Stainless steel	3.25	RKMFK108
133	133.0	Stainless steel	5.06	RKMFK133
159	159.0	Stainless steel	5.95	RKMFK159



Non-galvanized carbon steel  
Stainless steel AISI 304 - 1.4301  
Stainless steel coupling: lever in galvanized carbon steel  
Assembly: Welding  
Standard seal SBR included





## CARDAN COUPLINGS



## MALE PLUG

ND	Material	Weight/pc Kg	Reference
50	Carbon steel	0.30	PKV050
70	Carbon steel	0.42	PKV063
89	Carbon steel	0.55	PKV075
108	Carbon steel	0.86	PKV100
133	Carbon steel	1.19	PKV125
159	Carbon steel	1.70	PKV150
50	Stainless steel	0.25	PKV050
70	Stainless steel	0.39	PKV063
89	Stainless steel	0.50	PKV075
108	Stainless steel	0.79	PKV100
133	Stainless steel	1.05	PKV125
159	Stainless steel	1.55	PKV150

Galvanized carbon steel  
Stainless steel AISI 304 - 1.4301



## FEMALE CAP

ND	Material	Weight/pc Kg	Reference
50	Carbon steel	1.82	PKM050
70	Carbon steel	1.53	PKM063
89	Carbon steel	2.15	PKM075
108	Carbon steel	3.65	PKM100
133	Carbon steel	5.49	PKM125
159	Carbon steel	6.68	PKM150
50	Stainless steel	1.69	PKM050
70	Stainless steel	1.50	PKM063
89	Stainless steel	2.01	PKM075
108	Stainless steel	3.45	PKM100
133	Stainless steel	5.40	PKM125
159	Stainless steel	6.53	PKM150

Galvanized carbon steel  
Stainless steel AISI 304 - 1.4301  
Stainless steel coupling: lever in galvanized carbon steel  
Standard seal SBR included



## MALE PART WITH FLANGE IN COMPLIANCE WITH EN / DIN

ND	Material	Weight/pc Kg	Reference
50	Carbon steel	3.07	KF050
70	Carbon steel	3.95	KF070
89	Carbon steel	5.16	KF089
108	Carbon steel	5.84	KF108
133	Carbon steel	7.11	KF133
159	Carbon steel	10.76	KF159

Galvanized carbon steel  
Flange standard: EN 1092-1 / 11 B; DIN 2633 form C PN 10/16



A.9.6



**TUBOR RACHÁ**  
ACESSÓRIOS E EQUIPAMENTOS INDUSTRIAIS, LDA.

Contribuinte N.º 502 547 294  
Sociedade, por Quotas • Capital Social 49.880 Euros  
Registado na C. R. C. de Loures sob o N.º 08511

## CARDAN COUPLINGS



## MALE PLUG

ND	Material	Weight/pc Kg	Reference
50	Carbon steel	0.30	KKV050
70	Carbon steel	0.42	KKV063
89	Carbon steel	0.55	KKV075
108	Carbon steel	0.86	KKV100
133	Carbon steel	1.19	KKV125
159	Carbon steel	1.70	KKV150
50	Stainless steel	0.25	RKV050
70	Stainless steel	0.39	RKV063
89	Stainless steel	0.50	RKV075
108	Stainless steel	0.79	RKV100
133	Stainless steel	1.05	RKV125
159	Stainless steel	1.55	RKV150

Galvanized carbon steel  
Stainless steel AISI 304 - 1.4301



## FEMALE CAP

ND	Material	Weight/pc Kg	Reference
50	Carbon steel	1.82	KKM050
70	Carbon steel	1.53	KKM063
89	Carbon steel	2.15	KKM075
108	Carbon steel	3.65	KKM100
133	Carbon steel	5.49	KKM125
159	Carbon steel	6.68	KKM150
50	Stainless steel	1.69	RKKM050
70	Stainless steel	1.50	RKKM063
89	Stainless steel	2.01	RKKM075
108	Stainless steel	3.45	RKKM100
133	Stainless steel	5.40	RKKM125
159	Stainless steel	6.53	RKKM150

Galvanized carbon steel  
Stainless steel AISI 304 - 1.4301  
Stainless steel coupling lever in galvanized carbon steel  
Standard seal SBR included



## MALE PART WITH FLANGE IN COMPLIANCE WITH EN / DIN

ND	Material	Weight/pc Kg	Reference
50	Carbon steel	3.07	KF050
70	Carbon steel	3.95	KF070
89	Carbon steel	5.16	KF089
108	Carbon steel	5.84	KF108
133	Carbon steel	7.11	KF133
159	Carbon steel	10.76	KF159

Galvanized carbon steel  
Flange standard: EN 1092-1 / 11 B; DIN 2633 form C PN 10/16



A.9.6



**TUBOR RACHÁ**  
ACESSÓRIOS E EQUIPAMENTOS INDUSTRIAIS, LDA.

Contribuinte N.º 502 547 294  
Sociedade por Quotas • Capital Social 49.880 Euros  
Registado na C. R. C. de Loures sob o N.º 08511

## CARDAN COUPLINGS



## FEMALE PART WITH FLANGE IN COMPLIANCE WITH EN / DIN 2633

ND	Material	Weight/pc Kg	Reference
90	Carbon steel	6.07	KE050
70	Carbon steel	8.10	KE070
89	Carbon steel	12.22	KE089
108	Carbon steel	13.51	KE108
133	Carbon steel	16.20	KE133
159	Carbon steel	20.59	KE159



Galvanized carbon steel  
Flange standard: EN 1092-1 / 11 B; DIN 2633 form C PN 10/16  
Standard seal SBR included

## MALE REDUCING COUPLING WITH SERRATED HOSE SHANK

ND	For hose mm	Material	Weight/pc Kg	Reference
108	50	Carbon steel	1.76	KV5050100
89	63	Carbon steel	1.70	KV5063075
108	75	Carbon steel	2.05	KV5075100
89	100	Carbon steel	2.14	KV5100075



Other dimensions and materials on request  
Assembly: band or bolt clamps

## FEMALE REDUCING COUPLING WITH SERRATED HOSE SHANK

ND	For hose mm	Material	Weight/pc Kg	Reference
108	50	Carbon steel	4.48	KM5050100
108	75	Carbon steel	4.69	KM5075100
89	100	Carbon steel	5.01	KM5100075
108	150	Carbon steel	5.80	KM5150100
133	150	Carbon steel	6.55	KM5150125



Other dimensions and materials on request  
Assembly: band or bolt clamps





## CARDAN COUPLINGS



O-RING SEAL SBR						
HD	OD Ø mm	ID Ø mm	Height mm	Material	Weight/pc kg	Reference
50	86.0	64.0	11.0	SBR	0.03	KX050
70	110.0	87.0	11.5	SBR	0.04	KX063
80	140.0	112.0	14.0	SBR	0.08	KX075
108	160.0	124.0	18.0	SBR	0.15	KX100
133	190.0	146.0	22.0	SBR	0.27	KX125
159	220.0	180.0	20.0	SBR	0.26	KX150



SBR = Styrene Butadiene Rubber  
NBR, EPDM on request

Other Cardan couplings on request available



Male-male reversing coupling  
Type: KDVT..



Female-female reversing coupling  
Type:KDMT..



Female-male reversing coupling  
Type:KGMV..



A.6.8



**TUBOR RACHÁ**  
ACESSÓRIOS E EQUIPAMENTOS INDUSTRIAIS, LDA.

Contribuinte N.º 502 547 294  
Societ. por Quotas • Capital Social 49.880 Euros  
Registado na C. R. C. de Loures sob o N.º 08511